



7508B

8' Tripod Kit w/ FT-R® SRL-R (721560R) + Storage Bags

CONTACT SALES

The FT-R SRL-R Tripod Kit delivers a complete, ready-to-deploy solution for confined space entry and rescue. Its lightweight tripod, safety chain, and leg brackets set up quickly for reliable stability, while the advanced FT-R SRL-R provides smooth lifeline control and rapid retrieval capability. Engineered for speed, strength, and safety when every second matters.

Features :

- Complete, portable system enables fast setup, rescue, and retrieval in confined space environments.
- Includes 60' FT R SRL R, 8' adjustable aluminum tripod, leg brackets, and safety chain for secure, stable operation.
- Lightweight, compact FT-R Class 1 SRL-R serves as both a self-retracting lifeline and a rapid-activation retrieval device.
- Durable aluminum tripod features two-stage telescoping legs with adjustable height from 5' to 8'.
- Convenient storage bags included for both the tripod and SRL-R device.
- For ANSI and OSHA compliance, please see individual component part #s



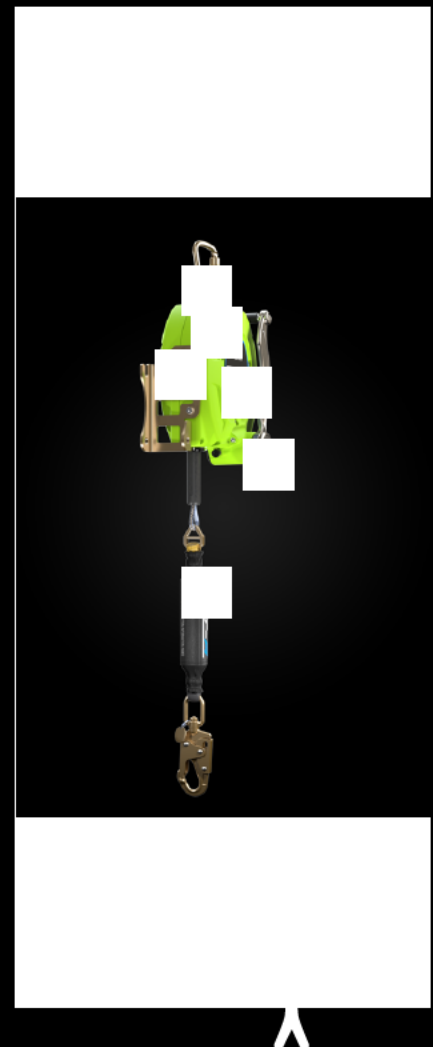
Material Specifications	
All Material Specifications	Please see each component Part # for individual material specifications
Relevant Standards	Please see each component Part # for individual relevant ANSI Standards and OSHA Regulations

Performance Specifications	
All Performance Specifications	Please see each component part # for individual performance specifications

Compliant With:	
For	ANSI and OSHA compliance, please see individual component part #s
7508	

FT-R® SRL-R Benefits:

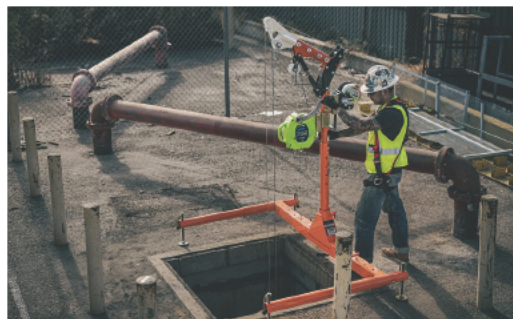
- Dual-Mode Functionality
- Smooth & Natural Movement
- Lightweight & Durable Design
- Simple & Secure Installation
- Lasting Construction
- ANSI Class 1 Compliant
- Low-Profile Shock Pack





Lightweight Construction

The reduced weight improves handling and setup, helping crews work faster and with less strain.



Integrated Retrieval

The built-in retrieval function stays ready for daily use and emergency response, eliminating the need for separate rescue equipment.



Versatile Rescue Operation

Workers can quickly engage rescue mode on a tripod or davit. Pull the plunger pin, deploy the collapsible hand crank, and raise or lower smoothly with precise control.

Available Options



60' FT-R SRL-R



7500B



7504B



7508B



7509B



6050328RB



6050428WRB

[VIEW PRODUCTS](#)

Answering Your FT-R SRL-R FAQs

How do I change modes on the FT-R SRL-R?

The FT-R SRL-R works like a standard self-retracting lifeline during normal use, automatically paying out and retracting the lifeline as the worker moves. If a fall occurs, you can switch the device into rescue mode by pulling the plunger pin and rotating the built-in hand crank. After switching modes, turn the crank clockwise to lower or counterclockwise to raise a worker to a safe level.

How much weight can the FT-R SRL-R support?

It's rated for workers up to 310 lbs.

Is the FT-R SRL-R ANSI-compliant?

Yes. It's ANSI Class 1 for anchoring at or above the D-ring and can be anchored up to 5 feet below the D-ring when no edge hazards are present.

Can I get the FT-R SRL-R as part of a confined space rescue system?

Yes. It's available as a standalone unit or packaged with a confined space tripod system in 8-foot or 11-foot configurations.

